



**MAERSK OIL**



# **Safety Performance 2008**

**Maersk Oil Qatar**

**Drilling Department**



## Safety Performance 2008

	<b>LWC</b>	<b>Minors</b>	<b>Near Misses</b>
<b>Numbers</b>	<b>7</b>	<b>7</b>	<b>29</b>

---

	<b>LWCF</b>	<b>TRIF</b>
<b>Frequency</b>	<b>4</b>	<b>8.1</b>
<b>2008 Targets</b>	<b>1.3</b>	<b>5.3</b>



Lost Workday Case

Noble Chuck Syring

August 26 2008



## What Happened?

Injured person was hit by Link tilt, resulting in:

- Broken Arm



Operation in progress.

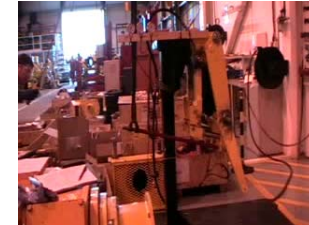
Picking up 4 3/4" Drill Collars.

Link tilt extended to outer position, hitting injured persons right arm.



## Root Causes

- Link tilt extended fully for unknown reasons



1

## Recommendations

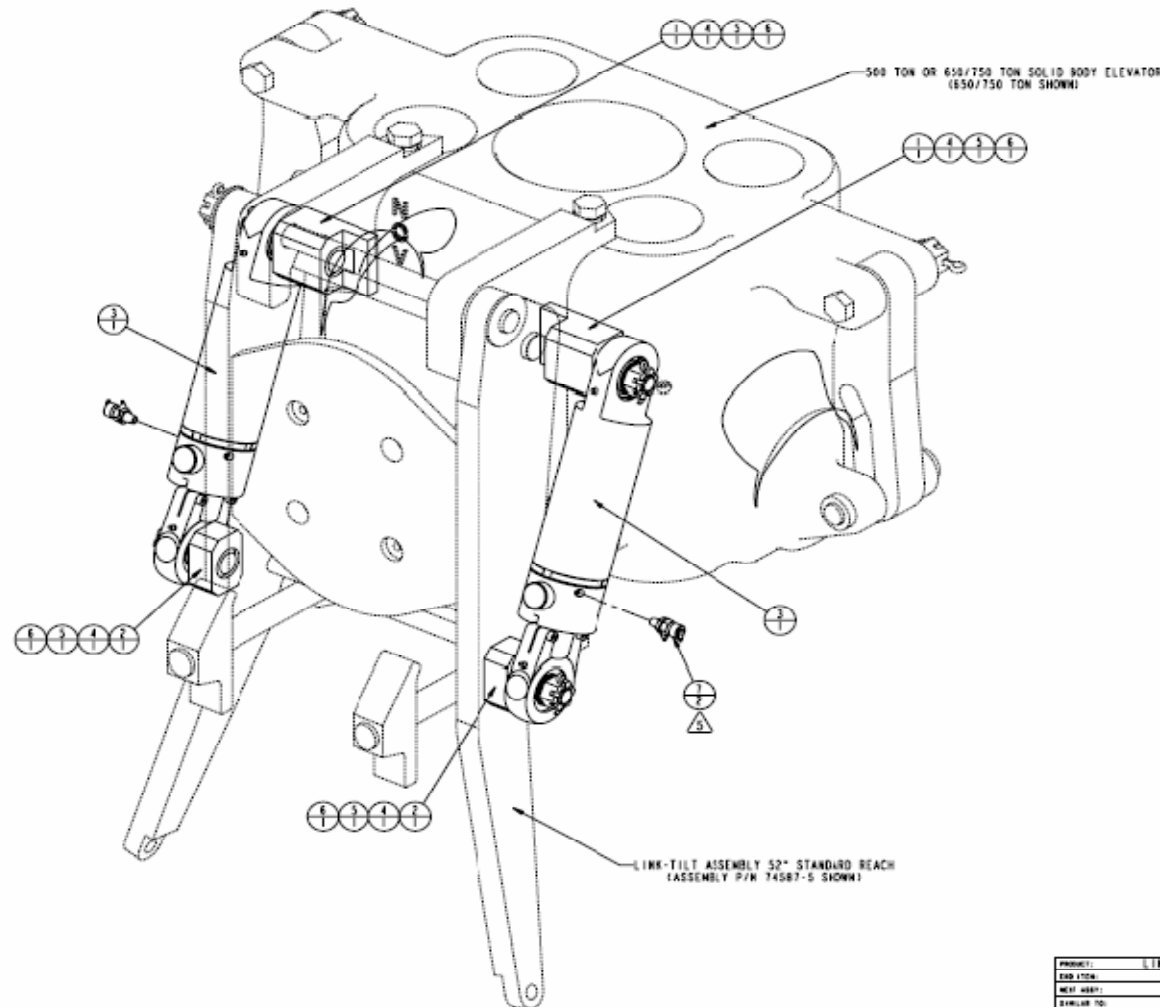
- Install Dampener cylinders
- Redesign release system



2



# MAERSK OIL



NOTES: UNLESS OTHERWISE SPECIFIED

1. DEBURR AND BREAK SHARP EDGES.
2. HDVCTO MOUNTS (ITEM Nos. 1 & 2) ARE SUPPLIED IN PRIMER ONLY. PAINT PRIMED SURFACES YELLOW AFTER WELDING IS COMPLETE AND TOUCH UP ANY HEAT DAMAGED AREAS.
3. ALL WELDS PER NOV SPEC. M000005, PAR. 2.0 & 3.0.
4. WELD INSPECTION: - 100% VISUAL - ALL LOCATIONS, 20% MPI - ALL LOCATIONS.
5. TEST FITTINGS (ITEM No. 7) ONLY TO BE INSTALLED DURING COMMISSIONING AND CONDITION MONITORING - SEE MANUAL.
6. REFERENCE:-  
D614000216-WAN-001 - SUPPLEMENTARY OWNERS MANUAL, LINKTILT HDVCTO RETROFIT KIT.
7. ALL DIMENSIONS ARE IN INCHES U.N.O.

QTY	PART NO.	DESCRIPTION
2	91024-2MPT	FITTING, TEST, 1/8 MPT
4	51403-16-S	PIN, COTTER
4	50816-M-C	WASHER, FLAT
4	50516-C	NUT, HEX-SLOTTED
2	P114000051	HEAVY DUTY VELOCITY CONTROLLER, 106mm STROKE
2	M114002184	ROD END MOUNT, HDVCTO
2	M114002183-500	BASE MOUNT, HDVCTO

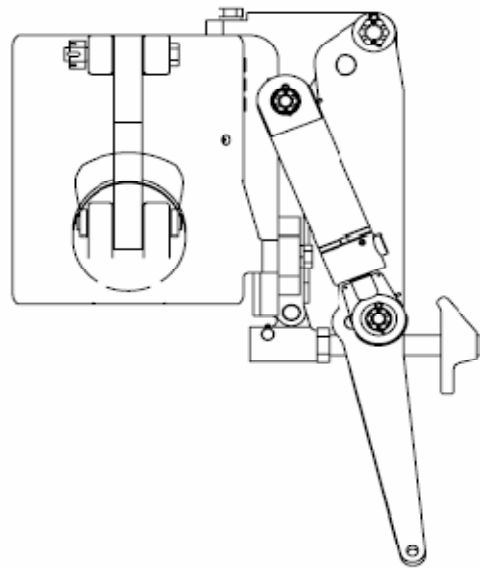
<b>PROJECT:</b> LINK-TILT <b>END ITEM:</b> <b>REVISED:</b> <b>SIMILAR TO:</b> <b>BY JN:</b>		<b>DESIGNED BY:</b> <b>DATE:</b> <b>DO NOT SCALE DRAWING</b>		<b>DATE:</b> <b>CURRENT:</b> <b>DATE:</b>		<b>SCALE:</b> <b>DATE:</b>		<b>DATE:</b>	
<b>UNLESS SPECIFIED OTHERWISE</b> <b>UNIT:</b>		<b>UNIT:</b> <b>UNIT:</b> <b>UNIT:</b>		<b>UNIT:</b> <b>UNIT:</b> <b>UNIT:</b>		<b>UNIT:</b> <b>UNIT:</b> <b>UNIT:</b>		<b>UNIT:</b> <b>UNIT:</b> <b>UNIT:</b>	

**NATIONAL OILWELL SERVICES**

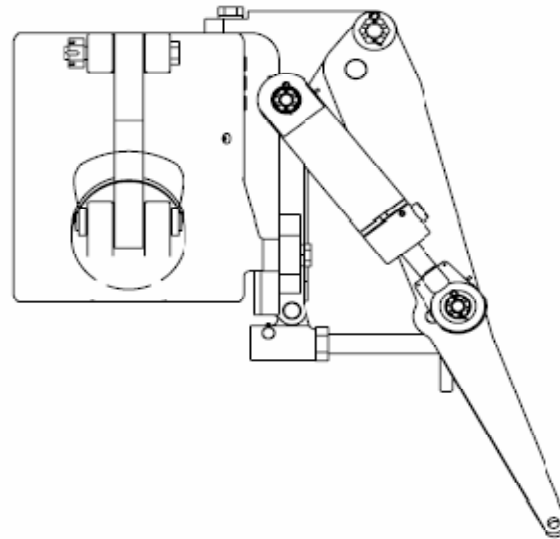
**HDVCTO RETROFIT KIT, 52" PNEUMATIC LINK TILT**

SCALE: 1:100    DRAWING:    DATE: D    SHEET: 1 OF 1

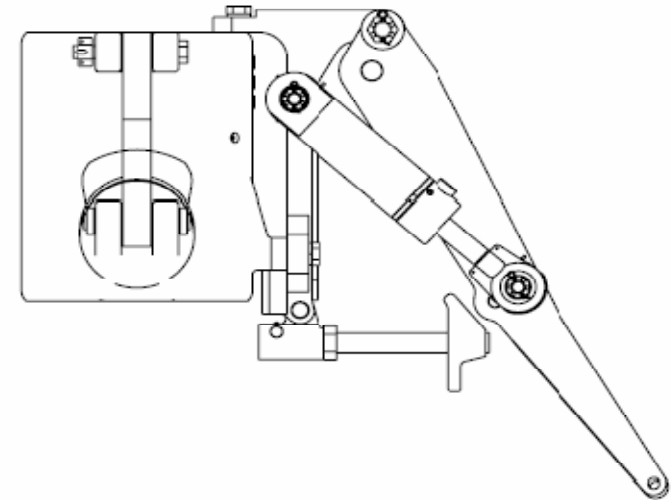
REV: 02    PART NO: **M614-002182-ASM-001**    REVISION: **A**



LINK-TILT ASSEMBLY  
LEVER ARM SHOWN IN CLOSED POSITION



LINK-TILT ASSEMBLY  
LEVER ARM SHOWN AT DIVINGBOARD POSITION



LINK-TILT ASSEMBLY  
LEVER ARM SHOWN AT MOUSEHOLE POSITION

DATE: 11/01/07  
BY: [signature]